

ST. THOMAS SCHOOL, DHURWA, RANCHI

STD 4

SCIENCE

Ch 2. HUMAN BODY : THE TEETH

ANSWERS

Test your understanding (page no. 24)

State whether true or false.

Ans1. True

Ans2. True

Ans3. False

Ans4. False

Ans5. True

EXERCISES (PAGE NO. 26-28)

A. CHOOSE THE CORRECT OPTION.

Ans1. b. 20

Ans2. b. Crown

Ans3. a. Premolars

Ans4. c. Dental plaque

Ans5. d. Eating sugary snacks and drinks

B. CHOOSE THE CORRECT WORD TO FILL IN THE BLANK.

Ans1. Enamel

Ans2. pulp

Ans3. incisors

Ans4. Canines

Ans5. Milk

C. WRITE T FOR TRUE AND F FOR FALSE STATEMENT.

Ans1. True

Ans2. True

Ans3. False

Ans4. True

Ans5. False

D. REPHRASE THE UNDERLINED WORDS TO COMPLETE THE FOLLOWING.

Ans1. By the time an adult is 20 years of age, he or she has about 32 permanent teeth.

Ans2. Crown is the part of the tooth that we can see and is not covered by the gum .

Ans3. Cementum makes up the root of the tooth which is anchored to the jawbone.

Ans4. The last teeth a person gets are wisdom teeth. They are also called third molars.

SUBJECTIVE TYPE QUESTIONS

E. Answer the following questions in short.

Ans1. A set of 32 teeth in an adult is called permanent teeth.

Ans2. The pulp is the innermost part of a tooth where nerve endings and blood supply are found.

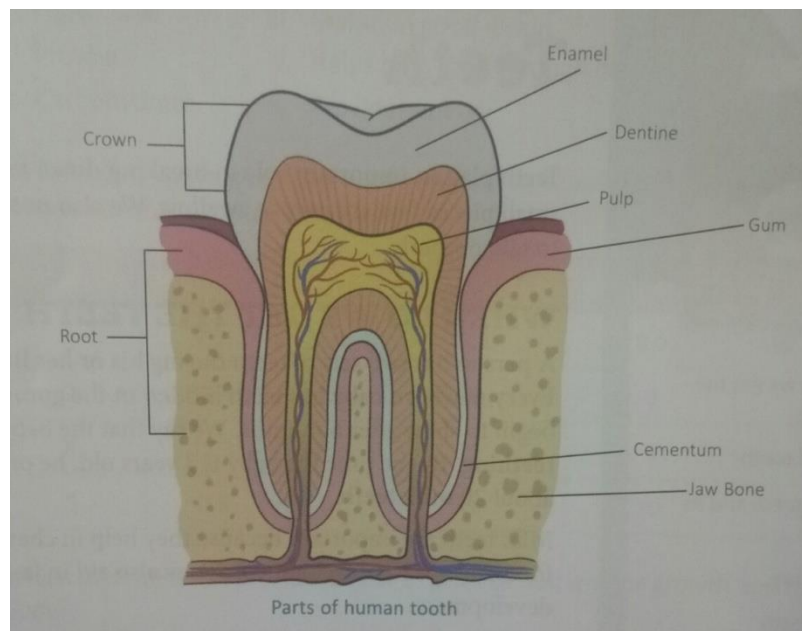
Ans3. Incisors are used for cutting and chopping food.

Ans4. Cementum serves as the root of the tooth.

Ans5. Dental plaque is a sticky, colourless film of bacteria formed on the teeth when they are not cleaned properly.

F. Answer the following questions in detail.

Ans1. The tooth has different parts.



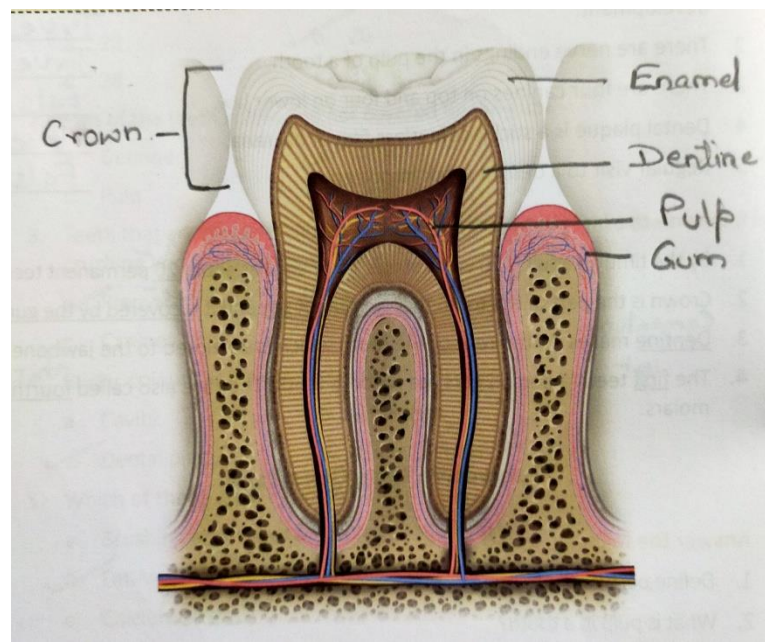
- i) The upper hard part of each tooth is called Crown and the lower part of tooth which is covered by the gum is called Root.
- ii) Enamel- Enamel is the outermost hardest covering of the crown. It protects the inside parts of the tooth.
- iii) Dentine – Dentine lies under the enamel and it makes up the largest part of the tooth.
- iv) Pulp – Pulp is the innermost part of the tooth where tooth's nerve endings and blood supply are found.

- v) Cementum – It makes up the root of the tooth, which is anchored to the jawbone.

Ans2. The following steps should be taken to avoid tooth decay:

- i) Brush teeth with a fluoride toothpaste properly, twice a day. We should brush teeth in little circles until we have covered every surface of every tooth. Brush up and down rather than side to side.
- ii) Rinse your mouth after every meal.
- iii) Visit the dentist on a regular basis.
- iv) Eat fewer sugary snacks and sugary/fizzy drinks.
- v) Clean the teeth with dental floss to remove food particles and plaque from the gaps in between the teeth.
- vi) Drink milk and eat a balanced diet to keep teeth healthy and strong.

PICTURE BASED QUESTION



APPLICATION BASED QUESTIONS

Ans1. (i) The different types of teeth in our mouth are :

- a) Incisors – The front four teeth on the upper jaw and four on the lower jaw are the incisors. They are shaped like tiny chisels with flat ends that are sharp. They are used for cutting and chopping food.
- b) Canines – The pointed and sharp teeth beside the incisors are canines. There are four canines, two on the upper jaw and two on the lower jaw. They help to tear food.
- c) Premolars – There are eight premolars, four on the upper jaw and four on the lower jaw. They are next to the canines. Premolars are bigger, stronger and have ridges. They are used for crushing and grinding food.
- d) Molars – We have twelve molars, six on the upper jaw and six on the lower jaw. They are wider and stronger than premolars, and have more ridges. They are used for crushing and grinding food.

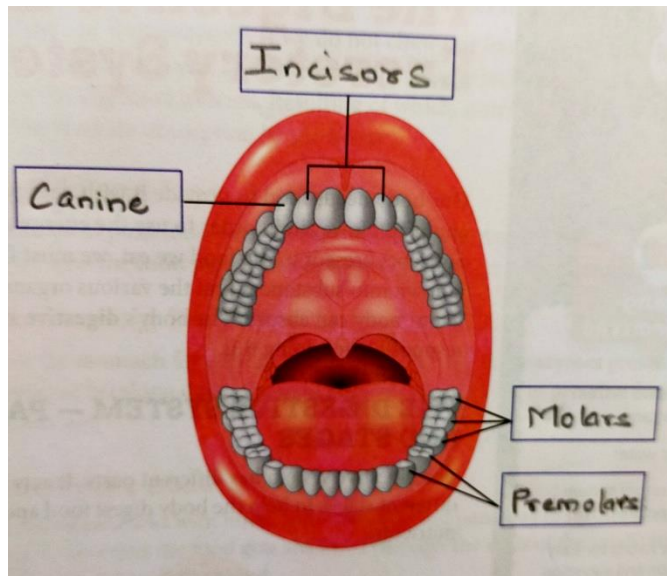
Ans (ii) We use incisors to bite into a sandwich. Incisors are best for biting because they are shaped like tiny chisels with flat ends that are sharp while molars and premolars are best for chewing because they are bigger , stronger and have ridges.

Ans2. The pain in the teeth starts only when cavity reaches the pulp because the nerve endings are present in the pulp and

when the nerve endings send message to the brain about the cavity , we feel the pain.

WORKSHEET

Ans A.



- Ans B.
1. Brush teeth with a fluoride toothpaste, twice a day.
 2. Rinse your mouth after every meal.
 3. Clean the teeth with dental floss to remove plaque and food particles from the gaps between the teeth.
 4. Eat fewer sugary snacks and sugary or fizzy drinks.