

Division

Divide by repeated subtraction

1. $20 \div 5$

$$20 - 5 = 15$$

$$15 - 5 = 10$$

$$10 - 5 = 5$$

$$5 - 5 = 0$$

$$\therefore 20 \div 5 = 4$$

2. $4 \div 2$

$$4 - 2 = 2$$

$$2 - 2 = 0$$

$$\therefore 4 \div 2 = 2$$

3. $6 \div 3$

$$6 - 3 = 3$$

$$3 - 3 = 0$$

$$\therefore 6 \div 3 = 2$$

4. $6 \div 2$

$$6 - 2 = 4$$

$$4 - 2 = 2$$

$$2 - 2 = 0$$

$$\therefore 6 \div 2 = 3$$

5. $10 \div 5$

$$10 - 5 = 5$$

$$5 - 5 = 0$$

$$\therefore 10 \div 5 = 2$$

6. $12 \div 3$

$$12 - 3 = 9$$

$$9 - 3 = 6$$

$$6 - 3 = 3$$

$$3 - 3 = 0$$

$$\therefore 12 \div 3 = 4$$

7. $12 \div 6$

$$12 - 6 = 6$$

$$6 - 6 = 0$$

$$\therefore 12 \div 6 = 2$$

8. $16 \div 4$

$$16 - 4 = 12$$

$$12 - 4 = 8$$

$$8 - 4 = 4$$

$$4 - 4 = 0$$

$$\therefore 16 \div 4 = 4$$

9. $15 \div 5$

$$15 - 5 = 10$$

$$10 - 5 = 5$$

$$5 - 5 = 0$$

$$\therefore 15 \div 5 = 3$$

10. $21 \div 7$

$$21 - 7 = 14$$

$$14 - 7 = 7$$

$$7 - 7 = 0$$

$$\therefore 21 \div 7 = 3$$

11. $24 \div 8$

$$24 - 8 = 16$$

$$16 - 8 = 8$$

$$8 - 8 = 0$$

$$\therefore 24 \div 8 = 3$$

12. $18 \div 9$

$$18 - 9 = 9$$

$$9 - 9 = 0$$

$$\therefore 18 \div 9 = 2$$

Divide into equal groups by drawing dots. (Draw dots by turn in each box.)

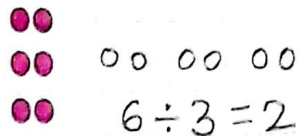
1. $6 \div 2$



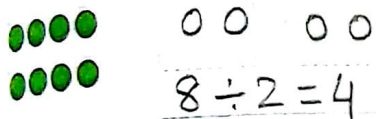
Dividing by 2 gives half the number.
3 is half of 6.



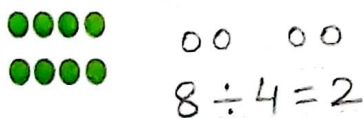
2. $6 \div 3$



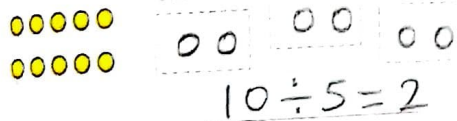
3. $8 \div 2$



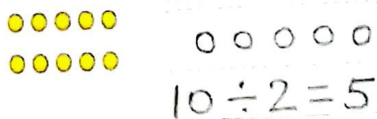
4. $8 \div 4$



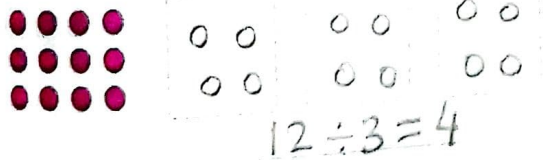
5. $10 \div 5$



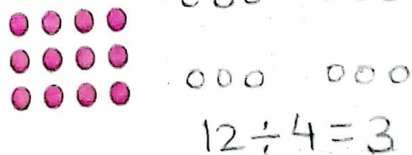
6. $10 \div 2$



7. $12 \div 3$



8. $12 \div 4$



9. $15 \div 5$



10. $15 \div 3$

